

# *Operation Manual*

## *i-605RM*



EAGLE AMERICA SALES CORPORATION  
2517 W 237th Street, Unit C  
Torrance, CA 90505

**ACEBIL**  
CAMERA SUPPORT EQUIPMENT

# **i-605RM**

## **Tripod System Package**

Copyright © Eagle America Sales Corporation 2011

All rights reserved. Reproduction of any part of this document including images, artwork, or writing without prior written consent of Eagle America Sales Corporation in writing is strictly prohibited.

# Safety



Where there is a risk of injury, or damage to equipment, this warning symbol will appear. This equipment may cause harm if not used in accordance with this operation manual.

## Before operating this equipment, please read manual for safety.

- Always maintain payload to within the maximum capacity limit.
- Ensure slide plate lock lever is firmly tightend.
- Ensure tripod is securely positioned, and all leg locks are in the locked position.
- Do not modify, or dismantle equipment, as it may cause damage, and injury.
- When using pan and tilt features, ensure the lock knobs are fully loosened.
- Always remove camera and accessories before transporting.
- Never carry tripod system by grabbing the pan arm as it may cause damage.

## Technical Specifications

Weight	3.6kg / 7.9lb
Height	77-150cm / 30.3"-59"
Payload	4kg / 8.8lb
Counter Balance	FIX
Pan Drag	FIX
Tilt Drag	FIX
Tilt Angle	+90/-60
Ball Diameter	65mm
Tripod Section	2 Stage
Camera Plate	Slide Plate
Slide Range	+20/-25mm
Plate Attachment	1/4"-Screw with video pin

# Contents

<b>Safety</b> .....	<b>3</b>
<b>Technical Specifications</b> .....	<b>3</b>
<b>Components</b> .....	<b>5</b>
<b>Counterbalance</b> .....	<b>6</b>
<b>Operation</b>	
<b>Setting up the Tripod</b> .....	<b>7</b>
<b>Mounting the Camera</b> .....	<b>8</b>
<b>Balancing</b> .....	<b>9</b>
<b>Pan and Tilt</b> .....	<b>10</b>
<b>Further Information</b> .....	<b>11</b>



- 1 - Slide Plate
- 2 - Tilt Lock Knob
- 3 - Pan Bar Lock Knob
- 4 - Pan Lock Knob
- 5 - RMC - P3PL Zoom Pan Bar
- 6 - Slide Plate Lock Knob
- 7 - Ball Leveler

- 8 - Bubble Level
- 9 - Ball Leveler Fixing Handle
- 10 - Lower Leg Lock
- 11 - Upper Leg Lock
- 12 - Spreader Brace
- 13 - Transport Lock & Strap
- 14 - Spike Foot

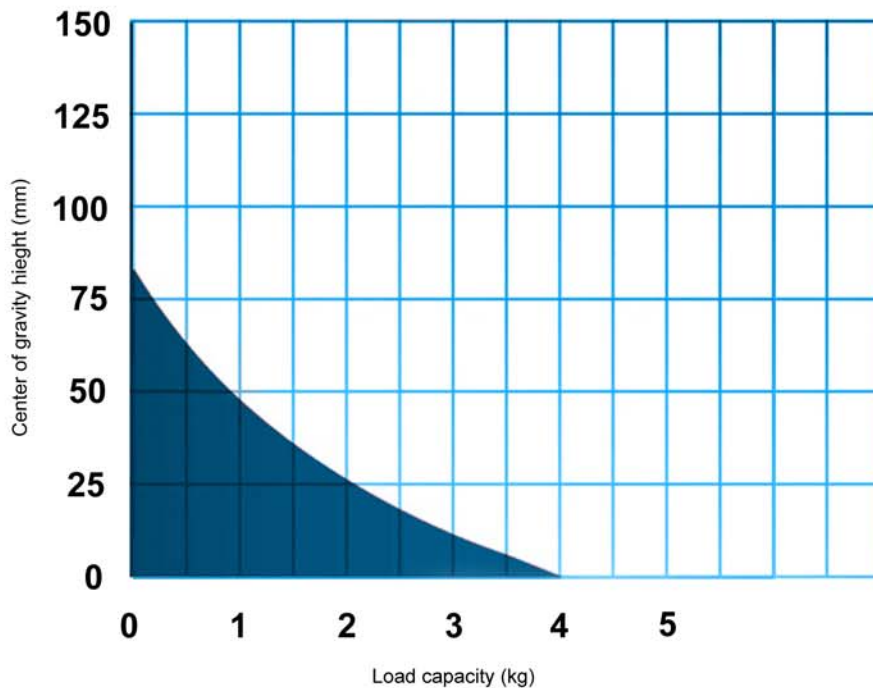
# i-605RM

## Counter Balance

The definitive way to find the most accurate counterbalance between camera/accessories and a tripod head is to actually mount the camera on the head. However, you can use this counterbalance chart to get a rough idea of the correct counterbalance.

The vertical axis of the chart depicts the height of the gravitational center and the horizontal axis is load weight (total weight of the camera and accessories). Based on the combination of these two elements, you can find a suitable tripod head for your camera.

When a standard lens, microphone and battery are used, the normal height of the gravitational center is approximately 125mm / 4.9"(for a shoulder type camera), 100mm / 3.9" (semi-shoulder) and 75mm / 3.0" (hand-held). The height of the gravitational center will not shift much even when a different lens or a different battery is used on the back of the camera. Please be aware that attaching a light or a monitor on top of the camera will shift the center of gravity.



# Setting up the tripod.

1. Unlock the transport lock by pulling the strap, freeing the lock.
2. Extend tripod to desired height.
  - ① Unlock upper leg locks while holding the tripod.
  - ② Adjust legs to desired height, and re-engage leg locks. Repeat with lower leg locks if needed.
3. Unfold tripod, and ensure spreader is extended and fully horizontal.
4. Adjust pan arm position.
  - ① Loosen pan arm lock knob, set to desired position..
  - ② Tighten pan arm lock knob firmly.



# Mounting the camera.

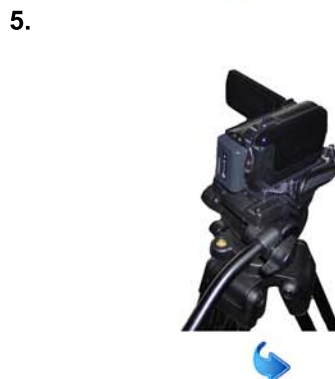


Load capacity is 4kg / 8.8lbs. - Do exceed the load capacity as it may cause damage to equipment or injury.

When mounting and removing camera, ensure the tilt lock knob is firmly tightened.

1. Ensure tilt lock knob is tightened.
2. Remove the slide plate.
  - ① Loosen the slide plate lock lever.
  - ② Pull slide plate out.
3. Mount the camera to the slide plate.

Align the camera screw and video boss with the camera, and tighten camera screw securely.
4. Mount camera and slide plate to the tripod head.
  - ① With camera mounted, insert slide plate back into the tripod head.
  - ② Tighten slide plate lock lever securely, for final step.
5. Loosen the ball leveler fixing handle, adjust head using the bubble level, and tighten the ball leveler fixing handle securely.





# Balancing

When balanced correctly, it will take a minimum amount of effort to tilt the head smoothly.

When perfect balance is achieved, the head and payload can be set to any tilt angle, and will maintain its position without the operator holding it ( hands free ).

Ensure all accessories, including pan arms are mounted prior to balancing.



**Prevent the payload from free falling when tilt lock knob is loosened.**

**Failure to secure the camera and payload may result in damage to equipment and injury.**

While securing the payload, loosen the tilt lock knob, and adjust the slide plate position until perfect balance is achieved.



# Pan and Tilt

The head can be locked at any chosen position by using the pan and tilt lock knobs.  
To lock the head, turn lock knob fully clockwise.  
To unlock the head, turn lock knob fully counter-clockwise.



**DO NOT** use lock knobs to supplement drag, as it may cause damage to the head.

## ■ Panning

Unlock the pan lock knob by turning counter-clockwise fully.  
Pan the head left to right as needed.  
Lock into position by turning the pan lock knob clockwise fully.

## ■ Tilting

Unlock the tilt lock knob by turning counter-clockwise fully.  
Tilt the head up and down as needed.  
Lock into position by turning the tilt lock knob clockwise fully.



# Zoom Control Pan Bar

The RMC-P3PL is a universal controller for LANC and Panasonic Mini DV or HDV cameras. Simply use the switch to select your camera type. Equipped with a variable speed zoom control knob and expandable cable. The RMC-P3PL's light weight and compact size is an incomparable feature of value and quality.

## ■ Connector Cable

Pull the retractable cable out and connect to the camera. When storing, unplug from the camera and let the retractable cable wind back into the Pan Bar. Use the switch to choose between LANC and Panasonic.



## ■ Operation

Use the record start/stop button for recording. Use the rocker knob to zoom in and out. It is touch sensitive, so you can control the zoom speed by how far you turn the knob.



# Further Information

For more information on products listed in this manual, visit us online:

[www.acebil.com](http://www.acebil.com)

or contact us at:

**Eagle America Sales Corporation**  
**Acebil**  
2517 W 237th Street, Unit C  
Torrance, CA 90505

**TEL: (310) 257-8886**

**FAX: (310) 257 8885**

To view our full line of Acebil camera support equipment, visit us online:

[www.acebil.com](http://www.acebil.com)

The logo for Acebil, featuring the word "ACEBIL" in a bold, blue, sans-serif font. The letters are stylized with a slight shadow effect, giving them a three-dimensional appearance.

*Camera Support Equipment*